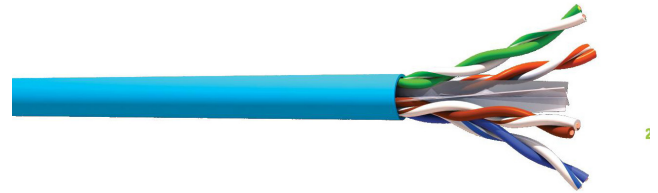
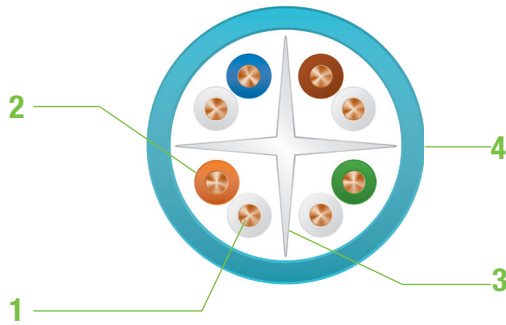




## VG6xSHy

100Ω U/UTP CAT6 4 pairs or 2x4 pairs cable 250MHz LSZH sheath



- 1. **Conductor** : solid bare copper AWG23
- 2. **Insulation** : PE HD
- 3. **Central member** : White or transparent thermoplastic cross
- 4. **Outer sheath** : LSZH - Light blue RAL 5024

## DESCRIPTIONS

U/UTP cable 4 pairs or 2x4 pairs, VG6xSHy, can be used in horizontal link or vertical configuration as backbone. It constitutes the base of a structured cabling network and can support all the IP application.

Performances of the VG6xSH exceed the current standards, use with Multimedia Connect connectivity it will ensure conformity with Class E / CAT6 channel.

## APPLICATIONS

|                                |                                |
|--------------------------------|--------------------------------|
| Ethernet Base T up to 1Gbits/s | TOKEN RING 4/16 MBITS          |
| ISDN                           | ATM 155, 622Mbits/s & 1.2Gbits |
| IEEE 802.3 af PoE              |                                |

## STANDARDS

|                |                               |
|----------------|-------------------------------|
| <b>CABLE</b>   | IEC 61156-5 CAT6              |
| <b>SYSTEME</b> | ISO / IEC 11801 Ed2.2 Class E |

## ELECTRICAL PROPERTIES

|                                  |             |
|----------------------------------|-------------|
| Max linear electrical resistance | 95 Ω/Km     |
| Mutual capacity (nom)            | 45 pF/m     |
| Characteristic impedance         | 100 +/- 15Ω |
| Nominal Velocity Propagation     | 69%         |



## VG6xSHy

100Ω U/UTP CAT6 4 pairs or 2x4 pairs cable 250MHz LSZH sheath

### ENVIRONMENTAL PROPERTIES

|                          |                    |
|--------------------------|--------------------|
| CPR Level                | Dca - s2,d2,a2     |
| Fire behaviour           | IEC 60332-1        |
| Operating Temperature    | -20°C / +70°C      |
| Minimum bending radius   | 8 x cable diameter |
| <b>Compliant to RoHS</b> |                    |

### TRANSMISSION PERFORMANCES @20°C

| Freq (Mhz) | Attenuation  |               | NEXT (dB)    |               | PS NEXT (dB) |               | ACR-F (dB)   |               | PS ACR-F     |               | RL (dB)      |               |
|------------|--------------|---------------|--------------|---------------|--------------|---------------|--------------|---------------|--------------|---------------|--------------|---------------|
|            | standard (*) | typical value | standard (*) | typical value | standard (*) | typical value | standard (*) | typical value | standard (*) | typical value | standard (*) | typical value |
| 4          | 3.8          | 3.5           | 66.3         | 69            | 63.3         | 66            | 55.8         | 67            | 52.8         | 64            | 23.0         | 25            |
| 10         | 6.0          | 5.5           | 60.3         | 63            | 57.3         | 60            | 47.8         | 60            | 44.8         | 57            | 25.0         | 28            |
| 16         | 7.6          | 6.9           | 57.2         | 60            | 54.2         | 57            | 43.7         | 66            | 40.7         | 63            | 25.0         | 28            |
| 31.25      | 10.7         | 9.8           | 52.9         | 55            | 49.9         | 52            | 37.9         | 51            | 34.9         | 48            | 23.6         | 27            |
| 62.5       | 15.5         | 13.9          | 48.4         | 51            | 45.4         | 48            | 31.9         | 43            | 29.1         | 40            | 21.5         | 25            |
| 100        | 19.9         | 17.5          | 45.3         | 48            | 42.3         | 45            | 27.8         | 40            | 24.8         | 37            | 20.1         | 25            |
| 200        | 29.1         | 25.3          | 40.8         | 44            | 37.8         | 41            | 21.8         | 34            | 18.8         | 31            | 18.0         | 24            |
| 250        | 33.0         | 28.3          | 39.3         | 42            | 36.3         | 39            | 19.8         | 27            | 16.8         | 24            | 17.3         | 23            |

(\*) standard : values from IEC 61156-5

### ORDERING INFORMATION

| CABLE 4 PAIRS |                               |                   |                  |
|---------------|-------------------------------|-------------------|------------------|
| P/N           | DESCRIPTION                   | EXTERNAL DIAMETER | PACKAGING        |
| VG64SH        | CAT6 CABLE U/UTP 4 PAIRS LSZH | 6.5 mm            | DRUM 1000M       |
| VG64SH1       | CAT6 CABLE U/UTP 4 PAIRS LSZH |                   | COIL 100M        |
| VG64SH5       | CAT6 CABLE U/UTP 4 PAIRS LSZH |                   | DRUM 500         |
| VG64SHB       | CAT6 CABLE U/UTP 4 PAIRS LSZH |                   | BOX 305M         |
| VG64SHBRIB    | CAT6 CABLE U/UTP 4 PAIRS LSZH |                   | REEL IN BOX 305M |

| CABLE 2x4 PAIRS |                                 |                   |            |
|-----------------|---------------------------------|-------------------|------------|
| P/N             | DESCRIPTION                     | EXTERNAL DIAMETER | PACKAGING  |
| VG68SH          | CAT6 CABLE U/UTP 2x4 PAIRS LSZH | 6.5 x 13.5 mm     | DRUM 1000M |
| VG68SH1         | CAT6 CABLE U/UTP 2x4 PAIRS LSZH |                   | COIL 100M  |
| VG68SH5         | CAT6 CABLE U/UTP 2x4 PAIRS LSZH |                   | DRUM 500   |